

EMERGENCY PREPAREDNESS

Power Outages

Social Story





power outlet



light switch

Everything in our house that plugs into the wall or has a light switch uses “power”. When the T.V., lights, microwave, and refrigerator are working, the power is ON. When they are not working, the power is OFF. Sometimes the power is OFF to our house and lots of other people’s houses. That is called a Power Outage.



lights



T.V.



microwave



fridge

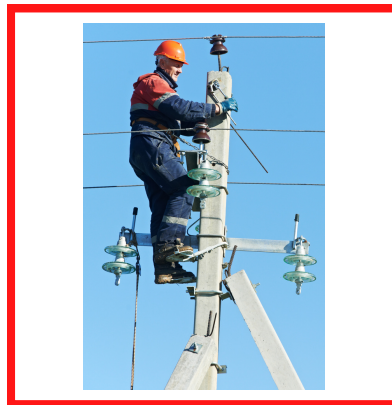
A power outage is when the lights in our house stop working and anything that is plugged into a wall stops working. Some things that will not work will be the T.V., the microwave, the fridge, and many other things too.



storm



wind



power worker

A Power Outage may happen if there is a storm, a lot of wind, or if it breaks. When this happens the power workers will come out and fix it.



scared



worried

MAKE A PLAN

Date _____

✓ when done

☐ _____

☐ _____

☐ _____

☐ _____

a plan



safe

When the power goes out I might feel scared or worried. It can feel unexpected, but it is ok. There is a plan to keep us safe.



power is out



candles



flashlights

If the power goes out we can use tools like candles or flashlights to help us see better.



power off



power on



together



safe

Sometimes the power will only be out for a little bit of time and everything will turn back on. We will be together and we are safe.



waiting in line to
get inside



inside a shelter



food and water



safe

Sometimes the power might be off for a long time. If that happens we will have a plan where we may have to stay in a shelter. A shelter is a place where people go when they need help. There will be food, water, blankets and many other things we need. Our family will be there with us too. We are safe!



power outage



calm

MAKE A PLAN

Date _____

✓ when done

<input type="checkbox"/>	_____
<input type="checkbox"/>	_____
<input type="checkbox"/>	_____
<input type="checkbox"/>	_____
<input type="checkbox"/>	_____

there is a plan



safe

If there is a Power Outage, I can stay
calm because I know that there is a plan
to keep us safe.

**We have more Emergency Preparedness
resources, videos, and information on our
CODSN Website.**

**[https://www.codsn.org/emergency-
preparedness/](https://www.codsn.org/emergency-preparedness/)**



**CENTRAL OREGON
Disability Support
Network**

Contact Information

Address: 2525 NE Twin Knolls #7, Bend, OR 97701

Phone: (541) 548-8559

Email: info@codsn.org

Website: www.codsn.org